

COMPANY PROFILE



WHIZZTECH HOTEL PROJECT CONSULTANTS .
SUITE NO. 18, PLOT NO. 47 , U&I CORPORATE CENTRE, SECTOR 32
GURUGRAM - 122001

ABOUT US

WHIZZTECH HOTEL PROJECT CONSULTANTS is a leading design and management firm providing comprehensive architectural, engineering and project management services.

At WHPC , our aim is to offer efficient and economical project consultancy with best of our knowledge and expertise in design and management.

WHPC has potential multi disciplinary design and management teams , turning imaginative ideas into engineering and construction marvels and provide service pan India .

WHPC is proud to have experienced professionals with exposure to deliver the scale projects in stipulated time and budget.

INTRODUCTION TO PRINCIPAL

TARUN KUMAR

Founder & Managing Director.

With an experience of over 21 years in various sectors of design and Project management ,he had delivered variuos landmark projects like

The Park Hyderabad , The Park Kochi , Ramada Darjeeling , Raas Kangra etc.



Before laying stone of WHIZZTECH , Tarun Kumar worked as Associate Director (Projects) with THE PARK Hotels .

Key Qualifications

- MBA in Real Estate and Project Management.
- Masters in Transport Planning.
- Bachelor in Architecture.

HIGHLIGHTS OF HOSPITALITY PROJECTS (COMPLETED)

SCOPE:-TECHNICAL AND PROJECT MANAGEMENT CONSULTANCY

*THE PARK, HYDERABAD



Project : The park Hyderabad
Site Area – 2 Acres
Total Built up – 4.5 Lakhs Sqft including 3 basements

Total Keys : 260 keys
Total Budget – 280 Crores

***THE PARK, HYDERABAD**



STREET LOBBY , LOUNGE



RECEPTION

*THE PARK, HYDERABAD



NIGHT CLUB

POOL DECK



*THE PARK, HYDERABAD



BANQUET

*THE PARK, HYDERABAD

**CORRIDOR,
ROOM &
WASHROOM**



*THE PARK, KOCHI

Project – The Park Kochi

Site Area – 5 acres

Total Built up area – 2.2 lakhs Sqft

Total Built up area of Hotel – 1.8
lakh Sqft

Total Keys – 170

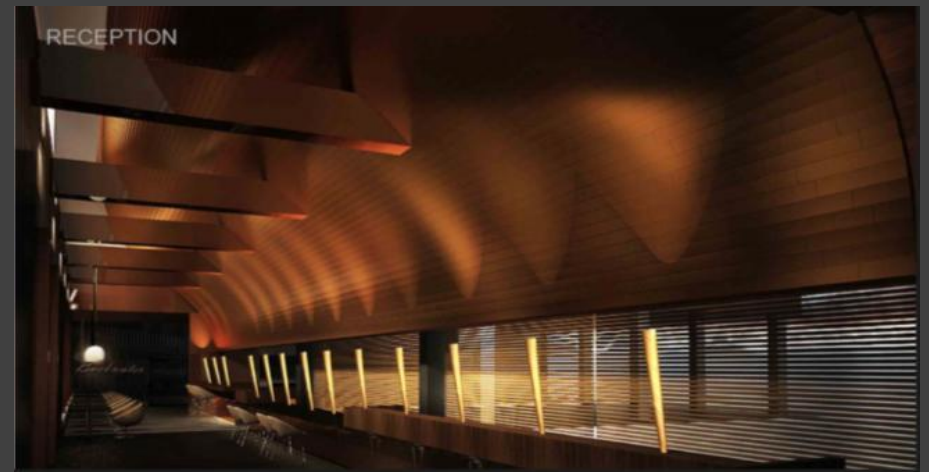
Project Budget – 100 Crores



*THE PARK, KOCHI



PORCH, LOUNGE AND RECEPTION



*THE PARK, KOCHI



BANQUET

*THE PARK, KOCHI

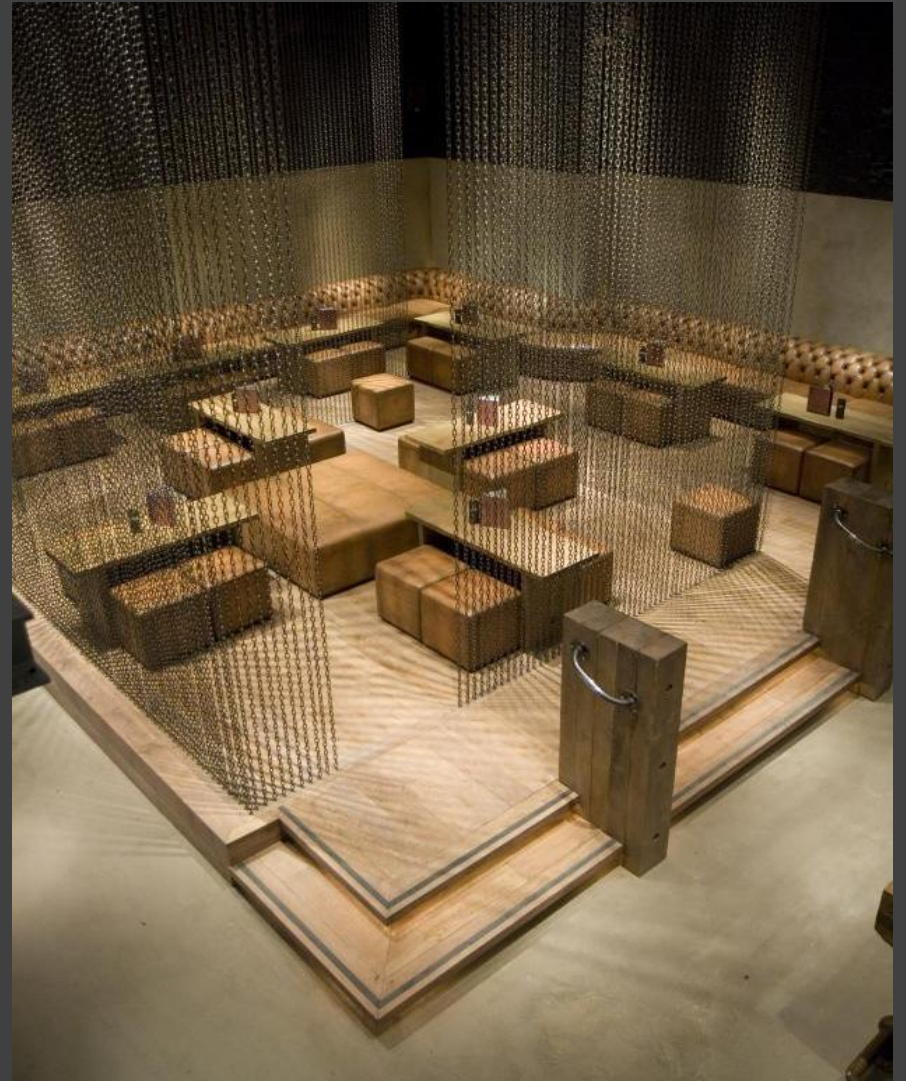
NIGHT CLUB



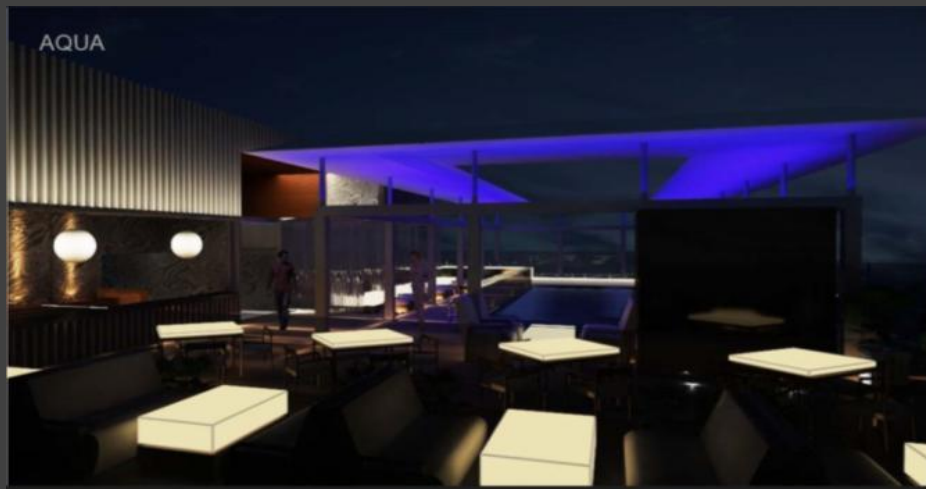
THE PARK, KOCHI



LOUNGE BAR

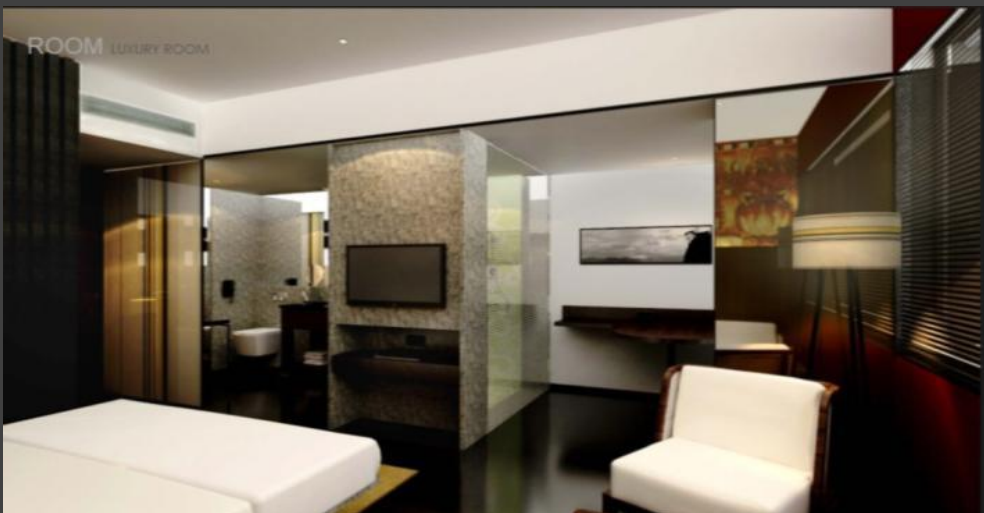


THE PARK, KOCHI



RESTAURANT AND SWIMMING POOL AT 28TH FLOOR

*THE PARK, KOCHI



14 FLOOR HEIGH ATTRIUM, ROOM AND WASHROOM

*ZONE BY THE PARK, MYSORE

Project : ZONE by The Park at
Mysore

Site Area - .5 Acres

Total Built up area – 76000 Sqft

Total Keys – 55

Total Project Budget – 30 Crores



***ZONE BY THE PARK , MYSORE**



LOBBY



COFFEE SHOP



BANQUET

*ZONE BY THE PARK , MYSORE

CORRIDOR , ROOM AND WASHROOM



* INDIVIDUAL EXPERIENCE

FAT BURGER (chain of American restaurants) , Cyber Hub , Gurgaon SCOPE – PROJECT MANAGEMENT CONSULTANCY



Total Area – 2000 Sqft
Total cost – 1.5 crore

RAMADA DARJEELING (GREEN FIELD)

SCOPE – COMPLETE DESIGN , TECHINCAL & PROJECT MANAGEMENT CONSULTANCY



Project : Ramada Darjeeling
Site Area – 0 .5 Acres
Total Built up – 66000 sqft

Total Keys : 66 keys
Total Budget – 40 Crores

3D VIEWS & ACTUAL SITE IMAGES OF LOBBY AND RECEPTION



IMAGES OF ACTUAL MOCK UP ROOM (Double Bed)



RAAS , KANGRA (Green Field)

SCOPE – TECHNICAL AND PROJECT MANAGEMENT CONSULTANCY



Project – 5 Star resort at Raas Kangra (Stalled)

Site Area – 17 Acres

Total built up area – 100000 Sqft

Total Keys – 41

Project Cost – 60 Crores

Raas, Kangara (Himachal Pradesh)



Raas, Kangara (Himachal Pradesh)



MOCK UP
ROOM

LEMON TREE, AMRITSAR (RENOVATION & CONVERSION – COMPLETE HOTEL)



Project : Lemon Tree Hotel, Amritsar
Site Area – 0.34 Acres
Total Built up – 47000 sqft

Total Keys : 61 keys
Total Budget – 27.5 Crores

LEMON TREE, AMRITSAR (RENOVATION & CONVERSION – COMPLETE HOTEL)



LOBBY AREA VIEWS

LEMON TREE, AMRITSAR (RENOVATION & CONVERSION – COMPLETE HOTEL)



BANQUET AREA VIEWS

RAMADA , ALIGARH



LOBBY AREA VIEWS

RAMADA , ALIGARH (BROWN FIELD)



Project : Ramada , Aligarh
Site Area – 2 Acres
Total Built up – 70,000 sqft

Total Keys : 60 keys
Total Budget – 24 Crores

RAMADA , ALIGARH



EXTERNAL BUILDING VIEWS

RAMADA , ALIGARH



MOCK UP ROOM VIEWS

RAMADA , ALIGARH



MOCK UP ROOM VIEWS

RAMADA , ALIGARH



OPEN AREA VIEW

BANQUET INTERIOR VIEW



HOTEL AT NARKANDA – DISTT. SHIMLA (BROWN FIELD)



Project : NARKANDA HOTEL
Site Area – 1 .25 Acres
Total Built up – 75000 sqft

Total Keys : 80 keys
Banquet – 10000 Sqft
Total Budget - 52 Crores

HOTEL AT NARKANDA – DISTT. SHIMLA



EXTERNAL BUILDING VIEWS

HOTEL AT NARKANDA – DISTT. SHIMLA



MOCK UP AREA VIEW

HIGHLIGHTS OF HOSPITALITY PROJECTS (ONGOING)

COUNTRY INN & SUITES BY RADISSON AT LUCKNOW (BROWN FIELD)



Project : Country Inn & Suites at Lucknow
Site Area – 3412 Sqm
Total Built up – 10197.56 Sqm

Total Keys : 82 keys
Total Budget - 53 Cr.

COUNTRY INN & SUITES BY RADISSON AT LUCKNOW



GUEST ROOM VIEWS

COUNTRY INN & SUITES BY RADISSON AT LUCKNOW



BAR



ALL DAY DINNING



RECEPTION



BANQUET

V W CANYON RAIPUR (RENOVATION & CONVERSION – COMPLETE HOTEL) SCOPE – DESIGN AND TECHNICAL CONSULTANCY



Project : V W Canyon Raipur (Owner – Haldirams Nagpur)
Site Area – 5 .72 Acres
Total Built up – 300000 sqft (Including Basement)

Total Keys : 119 keys
Banquet – 10000 Sqft
Total Budget – Crores



MOCK UP ROOM



HALL VIEW



MOCK UP ROOM



RECEPTION LOBBY

HIGHLIGHTS OF HOSPITALITY PROJECTS (IN PLANNING STAGE)

HOTEL AT NAGPUR – (GREEN FIELD PROJECT)

SCOPE – COMPLETE DESIGN , TECHINCAL & PROJECT MANAGEMENT CONSULTANCY



Project : HOTEL at Nagpur

Site Area – 6.7 Acres

Total Built up – 2,85,250 sqft

Total Keys : 180 keys

Total Budget - 180 Crores

HOTEL AT NAGPUR – (GREEN FIELD PROJECT)



EXTERNAL BUILDING VIEW

RESORT AT AJMER – (GREEN FIELD PROJECT)
SCOPE – COMPLETE DESIGN , TECHINCAL & PROJECT MANAGEMENT CONSULTANCY

MASTER PLAN



RESORT AT AJMER – (GREEN FIELD PROJECT)

3D VIEWS



RESORT AT AJMER – (GREEN FIELD PROJECT)



3D VIEWS



BANQUET AT NAGPUR (GREEN FIELD PROJECT) IN PEB STRUCTURE

SCOPE – COMPLETE DESIGN , TECHINCAL & PROJECT MANAGEMENT CONSULTANCY



Project : Banquet, Nagpur
Total Built up – 45000 sqft

Site Area – 2.2 Acres
Total Budget – 12 Crores

BANQUET AT NAGPUR (GREEN FIELD PROJECT)



BANQUET STAGE VIEW



OUTDOOR SEATING VIEW

BANQUET AT NAGPUR (GREEN FIELD PROJECT)



BANQUET INTERIOR VIEWS

THANK YOU